

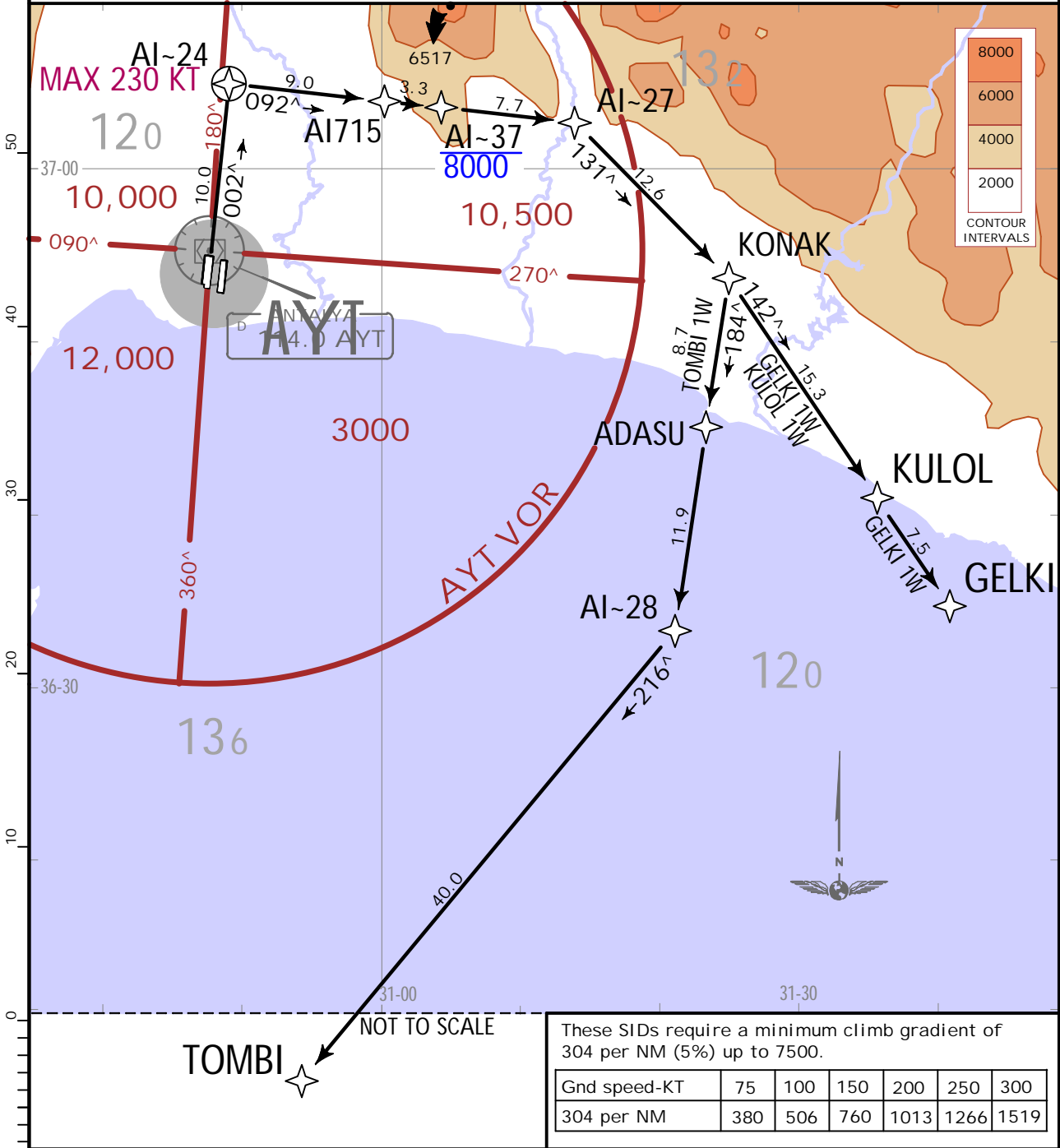
LTAI/AYT
ANTALYA INTL

JEPPESSEN
9 JUN 23 (10-3M) .Eff.15.Jun.

ANTALYA, TURKIYE
.RNAV.SID.

- Trans alt: 15000
1. RNAV (GNSS).
2. RADAR required.
3. P-RNAV approval required otherwise advice ATC.
4. After take off, immediately contact Antalya APP.
5. Initial contact with Approach unit for departing ACFTs shall contain: Call sign, SID and Crossing Altitude. Check ATIS to confirm the published frequency is the current one in use.
6. ATC may clear the aircraft direct to a waypoint published in a SID. After reaching this waypoint, follow remaining part of SID.
- Apt Elev
177

GELKI 1W [GELK1W]
KULOL 1W [KULO1W]
TOMBI 1W [TOMB1W]
RNAV DEPARTURES (RWY 36C)



SID	ROUTING
GELKI 1W	To AI-24 on course 002^ (MAX 230KT), turn RIGHT to AI715, to AI-37 at or below 8000, to AI-27, turn RIGHT to KONAK, turn RIGHT to KULOL, to GELKI.
KULOL 1W	To AI-24 on course 002^ (MAX 230KT), turn RIGHT to AI715, to AI-37 at or below 8000, to AI-27, turn RIGHT to KONAK, turn RIGHT to KULOL.
TOMBI 1W	To AI-24 on course 002^ (MAX 230KT), turn RIGHT to AI715, to AI-37 at or below 8000, to AI-27, turn RIGHT to KONAK, turn RIGHT to ADASU, to AI-28, turn RIGHT to TOMBI.

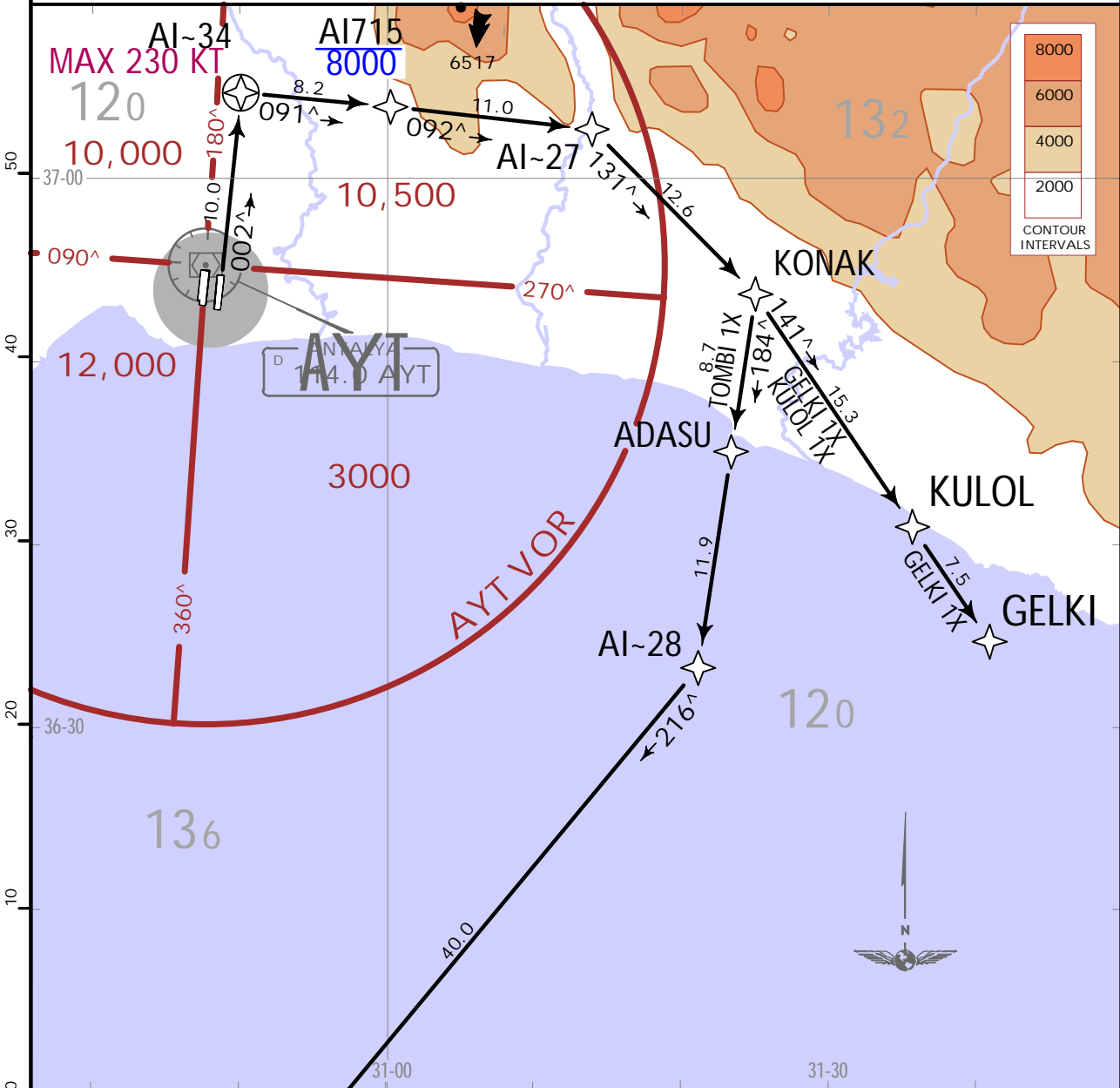
LTAI/AYT
ANTALYA INTL

JEPPESSEN
9 JUN 23 10-3N .Eff.15.Jun.

ANTALYA, TURKIYE
.RNAV.SID.

Apt Elev 177	Trans alt: 15000
	1. RNAV (GNSS). 2. RADAR required. 3. P-RNAV approval required otherwise advice ATC. 4. After take off, immediately contact Antalya APP. 5. Initial contact with Approach unit for departing ACFTs shall contain: Call sign, SID and Crossing Altitude. Check ATIS to confirm the published frequency is the current one in use. 6. ATC may clear the aircraft direct to a waypoint published in a SID. After reaching this waypoint, follow remaining part of SID.

GELKI 1X [GELK1X]
KULOL 1X [KULO1X]
TOMBI 1X [TOMB1X]
RNAV DEPARTURES (RWY 36R)



These SIDs require a minimum climb gradient of 304 per NM (5%) up to 7500.

Gnd speed-KT	75	100	150	200	250	300
304 per NM	380	506	760	1013	1266	1519

SID	ROUTING
GELKI 1X	To AI-34 on course 002^ (MAX 230KT), turn RIGHT to AI-715 at or below 8000, to AI-27, turn RIGHT to KONAK, turn RIGHT to KULOL, to GELKI.
KULOL 1X	To AI-34 on course 002^ (MAX 230KT), turn RIGHT to AI-715 at or below 8000, to AI-27, turn RIGHT to KONAK, turn RIGHT to KULOL.
TOMBI 1X	To AI-34 on course 002^ (MAX 230KT), turn RIGHT to AI-715 at or below 8000, to AI-27, turn RIGHT to KONAK, turn RIGHT to ADASU, to AI-28, turn RIGHT to TOMBI.

LTAI/AYT
ANTALYA INTL

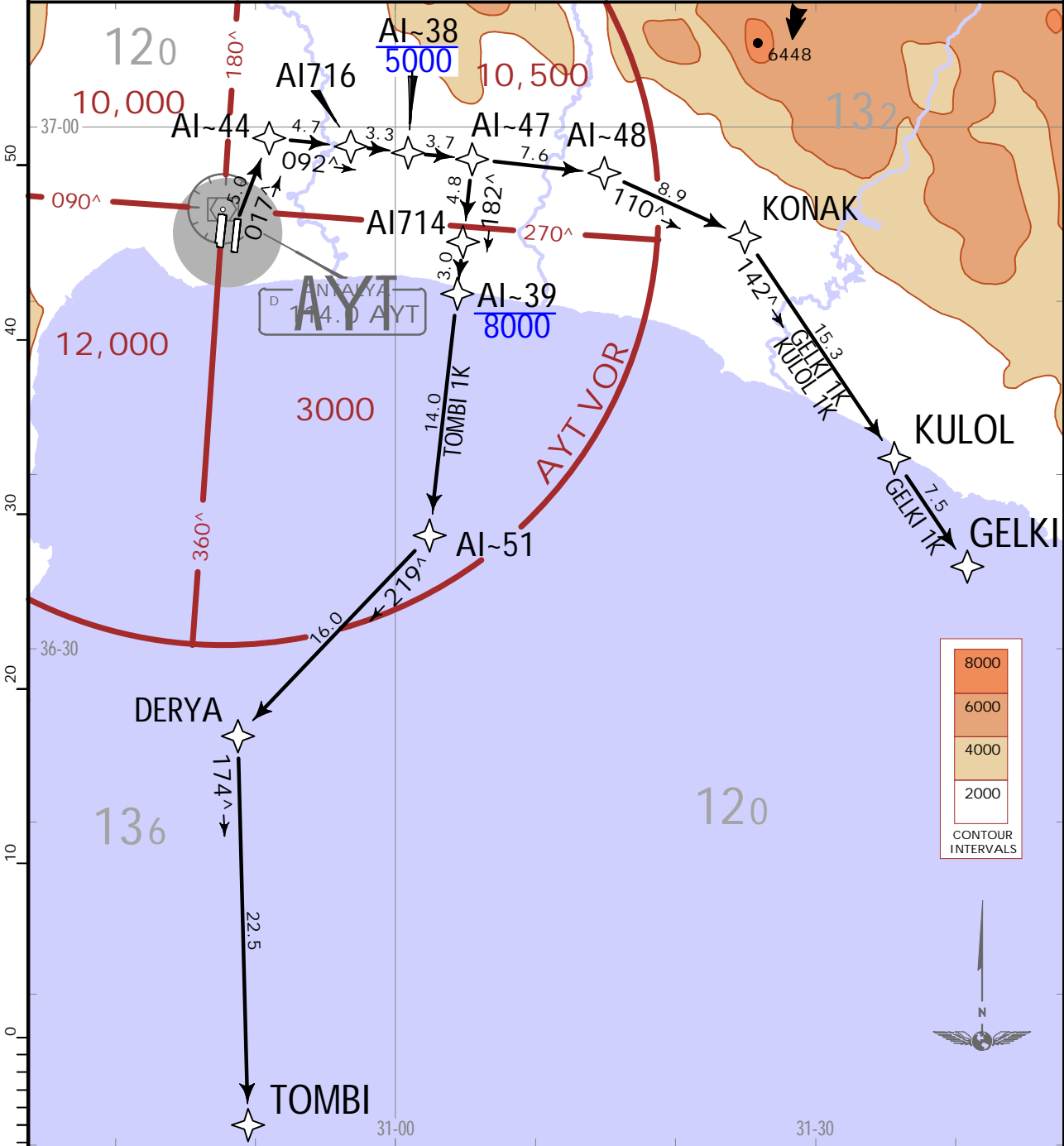


3 FEB 23 10-3P

ANTALYA, TURKIYE
.RNAV.SID.

Apt Elev 177	Trans alt: 15000
	1. RNAV (GNSS). 2. RADAR required. 3. P-RNAV approval required otherwise advice ATC. 4. After take off, immediately contact Antalya APP. 5. Initial contact with Approach unit for departing ACFTs shall contain: Call sign, SID and Crossing Altitude. Check ATIS to confirm the published frequency is the current one in use. 6. ATC may clear the aircraft direct to a waypoint published in a SID. After reaching this waypoint, follow remaining part of SID.

GELKI 1K [GELK1K]
KULOL 1K [KULO1K]
TOMBI 1K [TOMB1K]
RNAV DEPARTURES (RWY 36R)



SID	ROUTING
GELKI 1K	To AI-44 on course 017^, turn RIGHT to AI716, to AI-38 at or below 5000, to AI-47, to AI-48, turn RIGHT to KONAK, turn RIGHT to KULOL, to GELKI.
KULOL 1K	To AI-44 on course 017^, turn RIGHT to AI716, to AI-38 at or below 5000, to AI-47, to AI-48, turn RIGHT to KONAK, turn RIGHT to KULOL.
TOMBI 1K	To AI-44 on course 017^, turn RIGHT to AI716, to AI-38 at or below 5000, to AI-47, turn RIGHT to AI714, to AI-39 at or below 8000, to AI-51, turn RIGHT to DERYA, turn LEFT to TOMBI.

LTAI/AYT
ANTALYA INTL

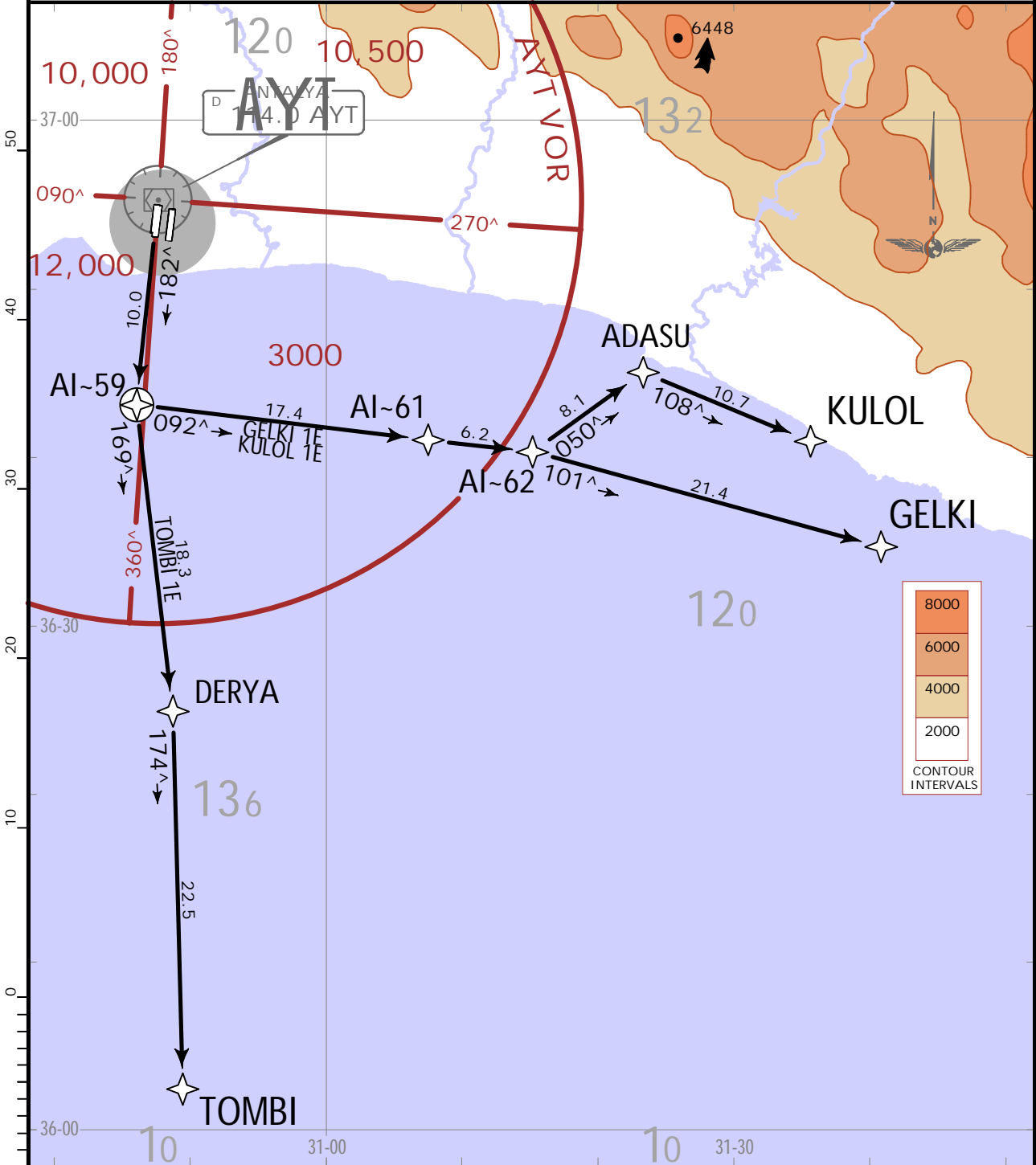
JEPPESSEN
3 FEB 23 10-30

ANTALYA, TURKIYE
.RNAV.SID.

Apt Elev
177

Trans alt: 15000
1. RNAV (GNSS).
2. RADAR required.
3. P-RNAV approval required otherwise advice ATC.
4. After take off, immediately contact Antalya APP. 5. Initial contact with Approach unit for departing ACFTs shall contain: Call sign, SID and Crossing Altitude. Check ATIS to confirm the published frequency is the current one in use. 6. ATC may clear the aircraft direct to a waypoint published in a SID. After reaching this waypoint, follow remaining part of SID.

GELKI 1E [GELK1E]
KULOL 1E [KULO1E]
TOMBI 1E [TOMB1E]
RNAV DEPARTURES (RWY 18C)



SID	ROUTING
GELKI 1E	To AI-59 on course 182°, turn LEFT to AI-61, to AI-62, turn RIGHT to GELKI.
KULOL 1E	To AI-59 on course 182°, turn LEFT to AI-61, to AI-62, turn LEFT to ADASU, turn RIGHT to KULOL.
TOMBI 1E	To AI-59 on course 182°, turn LEFT to DERYA, turn RIGHT to TOMBI.

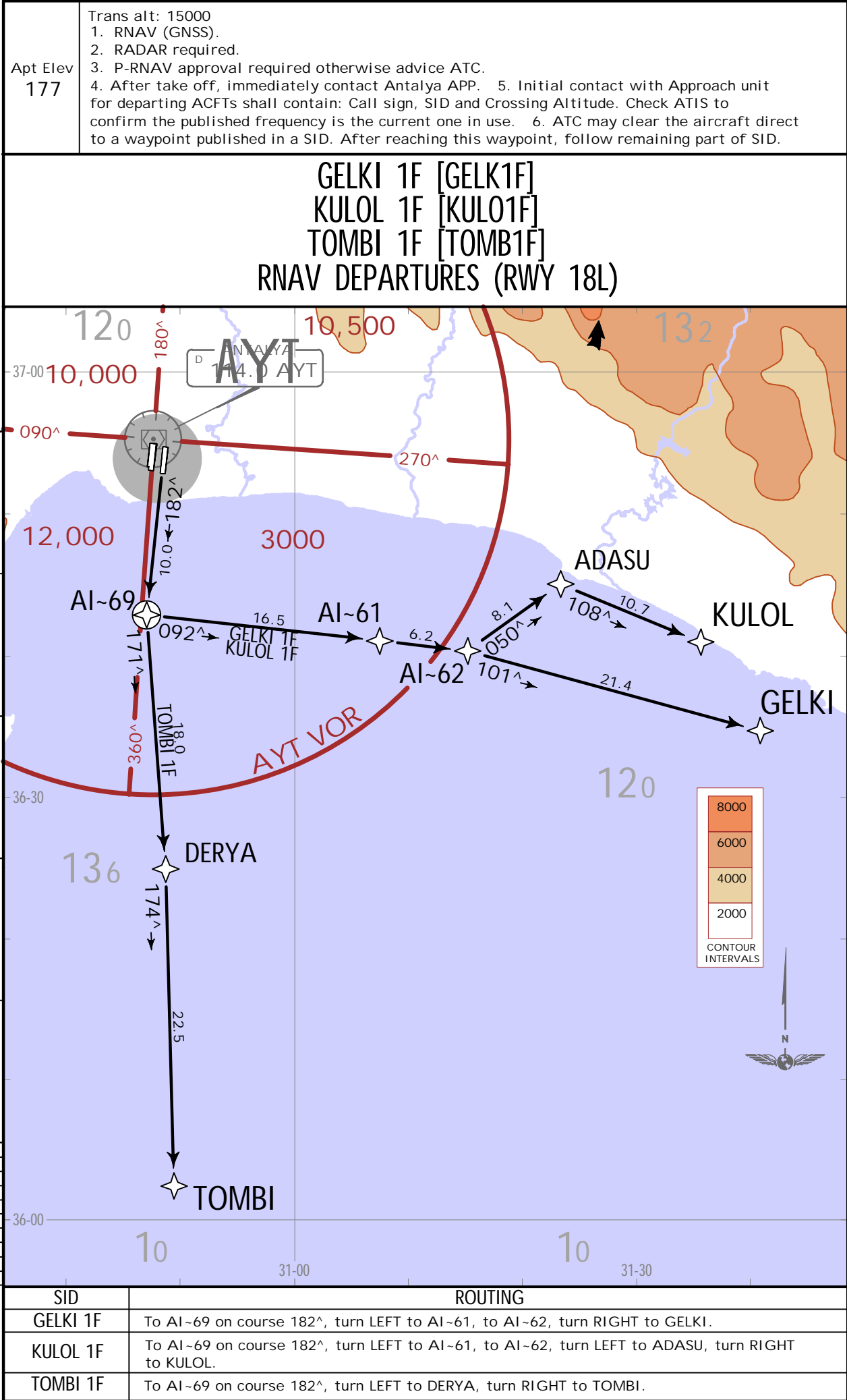
LTAI/AYT
ANTALYA INTL



3 FEB 23

10-3Q1

ANTALYA, TURKIYE
.RNAV.SID.



LTAI/AYT
ANTALYA INTL

JEPPESSEN
3 FEB 23 10-3Q2

ANTALYA, TURKIYE
.RNAV.SID.

